



Aplins Close Harpenden, AL5 2PZ

Three bedroom house in a quiet, central location. Ideally located for schools and the High Street

Guide price £650,000

Aplins Close

Harpenden, AL5 2PZ



- Three bedrooms
- Low maintenance garden
- Central location
- Refurbished kitchen & bathroom
- Off-street parking
- Quiet, cul de sac
- Open plan kitchen / diner
- Ideally located for schools
- Garage conversion to store / utility / shower room

Living Room

10'6" x 10'8" (5.96 x 3.27)

Kitchen / Diner

7'3" x 19'1" (2.23 x 5.82)

Utility Room with Shower

11'5" x 7'8" (3.48 x 2.36)

Store

5'2" x 8'11" (1.58 x 2.72)

Bedroom One

13'9" x 10'10" (max) (4.20 x 3.31 (max))

Bedroom Two

9'10" x 11'0" (3.01 x 3.36)

Bedroom Three

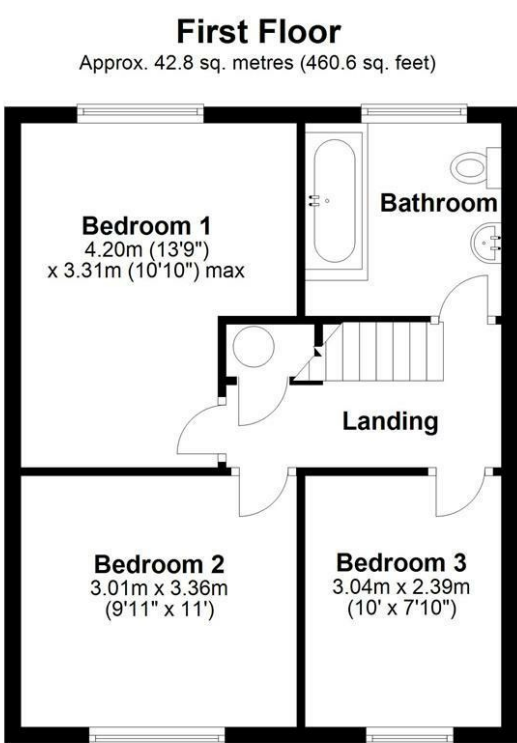
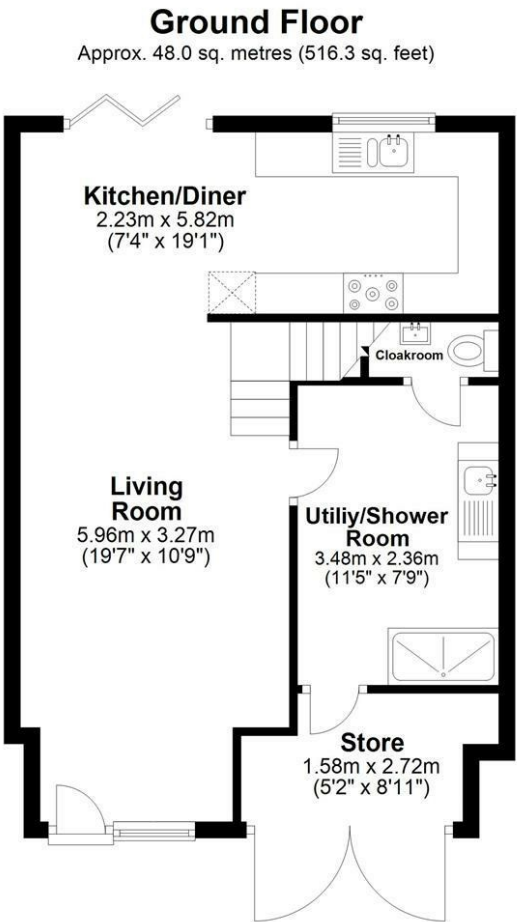
9'11" x 7'10" (3.04 x 2.39)

Bathroom





Floor Plan



Total area: approx. 90.8 sq. metres (976.9 sq. feet)
Sketch layout only. Not to scale. Plan produced for Whittaker & Co.
Plan produced using PlanUp.

These particulars, whilst believed to be accurate are set out as a general outline only for guidance and do not constitute any part of an offer or contract. Intending purchasers should not rely on them as statements of representation of fact, but must satisfy themselves by inspection or otherwise as to their accuracy. No person in this firms employment has the authority to make or give any representation or warranty in respect of the property.

